

PRODUCT WARNING



CAUTION:
RISK OF ELECTRIC SHOCK. DO NOT TAMPER. NO SERVICABLE PARTS INSIDE.

IMPORTANT SAFETY INSTRUCTIONS. READ ALL INSTRUCTIONS BEFORE INSTALLING AND USING THIS PRODUCT. KEEP IT FOR FUTURE REFERENCE.

When using electrical appliances, basic precautions should always be followed to reduce the risk of fire, electric shock, injury to persons, and hyperthermia, including the following:

1. This heater is hot when in use. To avoid burns, do not let bare skin touch hot surfaces. If provided, use handles when moving this heater. Keep combustible materials, such as furniture, pillows, bedding, papers, clothes, and curtains at least 3 feet (0.9 m) from the front of the heater and keep them away from the sides and rear.
2. Extreme caution is necessary when any heater is used and whenever the heater is left operating and unattended. This heater is not intended for persons (including children) with reduced physical, sensory, or mental capabilities, or a lack of experience with and knowledge, unless they have been given supervision or instruction concerning the use of the appliance by a person responsible for their safety.
3. Always unplug heater when not in use. This item may be omitted if the heater is provided with a clock-operated switch.
4. Do not operate any heater with a damaged cord or plug or after the heater malfunctions, has been dropped or damaged in any manner. Discard heater or return to an authorized service facility for examination and/or repair.
5. Do not use outdoors.
6. This heater is not intended for use in bathrooms, laundry areas, and similar indoor locations. Never place heater where it may fall into a bathtub or other water containers.

1

PRODUCT WARNING

7. Do not run cords under carpeting. Do not cover cords with throw rugs, runners, or similar coverings. Do not route cords under furniture or appliances. Arrange cords where it will not be tripped over and away from traffic areas. The heater must not be located immediately below a socket-outlet.
8. To disconnect heater, turn controls to OFF, then remove plug from outlet.
9. Do not insert or allow foreign objects to enter any ventilation or exhaust openings as this may cause an electric shock or fire or damage the heater.
10. To prevent a possible fire, do not block air intakes or exhausts in any manner. Do not use on soft surfaces, like a bed, where openings may become blocked.
11. A heater has hot and arcing or sparking parts inside. Do not use it in areas where gasoline, paint, or flammable liquids are used or stored.
12. Use this heater only as described in this manual. Any other use not recommended by the manufacturer may cause fire, electric shock, or injury to persons.
13. Always plug heaters directly into a wall outlet/receptacle. Never use with an extension cord or relocatable power tap (outlet/power strip).
14. Hyperthermia can result in death. Symptoms of hyperthermia include high body temperature, headache, nausea, vomiting, tiredness, dizziness, fainting, and rapid pulse. If you begin to experience symptoms related to hyperthermia, turn off the heater and seek medical attention.
15. To avoid excessive room temperatures which can cause hyperthermia, DO NOT leave product running unattended in a confined space around infants or individuals with reduced physical, sensory, or mental capabilities.
16. Make sure that no pieces of polystyrene or other packaging material have been left between elements of this product. It may be necessary to pass over this product with a vacuum cleaner. Dispose of all packaging and product materials in an environmentally responsible manner.

2

PRODUCT WARNING

17. Choking Hazard - this product may contain small parts. Keep away from children. If small parts are swallowed, seek medical attention at once.
18. Prior to cleaning, storage, or any time when this product is not in use, turn off the power and unplug the cord to allow it to cool. Clean this product regularly, only as instructed in this manual. Do not use gasoline, thinners, solvents, ammonias, or other chemicals for cleaning.
19. There may be a trace of smoke or odor when this product is first operated. This indicates that a drop of oil fell on the heating coil during the manufacturing process. It will quickly evaporate and should not reoccur.
20. Only use this heater on a horizontal, flat, and stable surface.
21. IMPORTANT - This product may have a US polarized plug (one blade is wider than the other). To reduce the risk of electric shock, this plug is intended to fit in a polarized outlet only one way. If the plug does not fit fully in the outlet, reverse the plug. If it still does not fit, contact a qualified electrician. Do not attempt to tamper with this safety feature.
22. **WARNING:** To reduce the risk of fire, keep textiles, curtains, or any other flammable material a minimum distance of 1 meter from the air outlet.

DO NOT attempt to repair this product yourself!

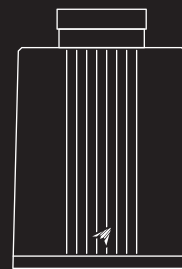
All service and/or repairs must be done by an authorized technician and/or electrician. Contact our customer service department at support@acinfinity.com or 626-923-6399 for product and warranty assistance.

DANGER - High temperatures may be generated under certain abnormal conditions. Do not partially or fully cover or obstruct this heater.

READ AND SAVE THESE INSTRUCTIONS.

3

PRODUCT CONTENTS



HEATER UNIT
(x1)



UIS EXTENSION
CORD (M-M)
(x1)



SENSOR
PROBE (V2)
(x1)



WIRE
TIE
(x4)



HOOK &
LOOP TIE
(x4)

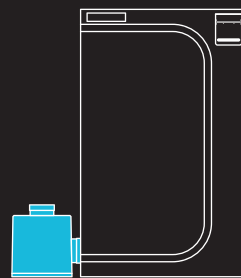
4

INSTALLATION

NO DUCTING

Place your heater to the side of your tent and direct the exhaust vent into the lower tent port.

WARNING: Do not operate the heater near liquids or in enclosed, high-humidity spaces to prevent risk of electric shock or fire.



Ensure the heater body is not touching the side of the tent and is away from any flammable items.

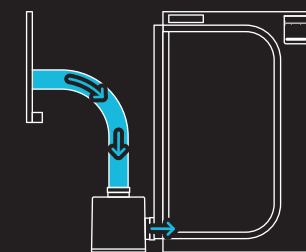
5

DUCTING*

Use 4 in. heat-resistant ducting to connect your heater to your tent. Twist your duct tube into the exhaust vent.

If you wish to use ducting for your intake vent, you may attach it with a duct clamp.

We do not recommend using your intake vent in high humidity climates greater than 70%.

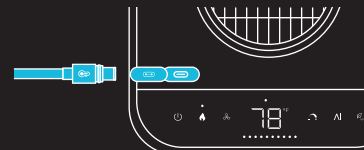


*Not included

POWERING AND SETUP

STEP 1

Plug the sensor probe into your heater.

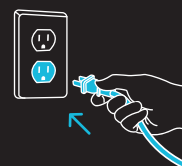


The port must be dry and capped when not in use to keep liquid and debris out.

Only use the included gray sensor with this device to prevent damage. Do not use sensors that were packaged with other devices.

STEP 2

Plug your heater's power plug into an outlet to power it.



When your heater is receiving power, the light at the top of the display will illuminate red.

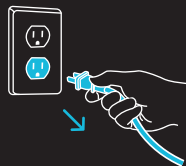


6

CLEANING

STEP 1

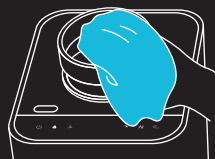
Turn your heater OFF before unplugging it.



Wait for your heater to cool down before cleaning it.

STEP 2

Remove the filter from the intake vent and rinse it with warm water.

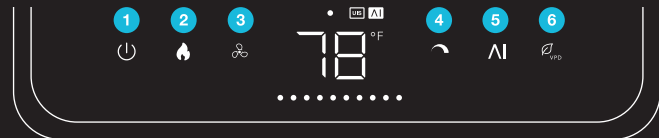


Wipe off any dust and debris from the grilles or vents using a damp cloth. Set aside to dry as needed.

Clean your heater regularly to remove dust and debris. DO NOT use detergent, solvents, or other such chemicals to clean it.

7

PROGRAMMING SETTINGS



1. POWER BUTTON

Turns your heater ON/OFF. First-time use defaults to level 6; subsequent uses restore the previous setting.

2. HEAT MODE

Turns HEAT mode ON. Pressing the button again increases the target setting. Hold to cycle past the target range until ON mode is activated. HEAT mode is indicated by orange lights.

3. FAN MODE

Turns FAN mode ON. Pressing the button again increases the target setting. Hold to cycle past the target range until ON mode is activated. FAN mode is indicated by white lights.

4. LEVEL BUTTON

Cycles through the mode's speed levels 1-10 indicated by the row of dots on the display. Press the button to increase the level by one. Cycling past 10 will return to level 1.

5. AI SETTING

Turns the AI setting ON/OFF. When active, the system dynamically ramps levels as the temperature shifts further from your target, ensuring precision climate control.

6. DISPLAY SETTING

Toggles between Celsius, Fahrenheit, and VPD settings.

For in-depth programming instructions, scan the QR code on page 11 to view a digital manual.

8

PROGRAMMING OTHER SETTINGS

FACTORY RESET

Hold the power and HEAT buttons together for 3 seconds to reset your heater and restore factory settings.

HOLD +

MUTE SOUND

Hold the power and display setting buttons together for 2 seconds to mute/unmute sound.

HOLD +

HIDE DISPLAY

Hold the display setting button for 3 seconds to hide the display. The mode indicator light will remain on. Press any button other than the power button to turn the display back on.

HOLD

NO LONGER UPRIGHT

Displays if your heater falls or is tilted past a 20° angle. An alarm will sound, and all programming will pause until it is back to an upright position.



OVERHEAT PROTECTION

Displays if your heater overheats. An alarm will sound, and all programming will pause. If this happens, turn off your heater, unplug it, and let it sit until it cools before restarting it.



FAULTY SYSTEMS ALERT

Displays if your heater detects a fault with its internal components. Please contact our customer service department for assistance.



If issues persist, contact our customer service department at support@acinfinity.com or (626) 923-6399 for product and warranty assistance.

9

PROGRAMMING ADVANCE PROGRAMMING

This heater is compatible with specific controller models. Please visit our website www.acinfinity.com for more information.

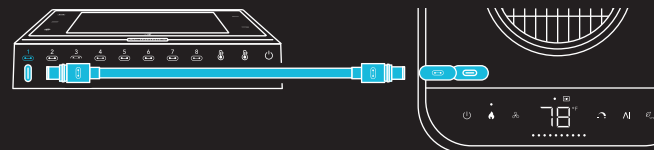
EXTENSION CABLE

Use the included UIS M-M extension cord to connect your heater to your controller (not included).

Your controller will override all onboard settings, assume control (parameters must be adjusted on your controller), and shut off your heater's button functions when connected in this manner.

This port is used by either the sensor or the UIS extension cord and cannot be used simultaneously. If you connect the included sensor into your heater, you cannot connect your heater to a smart controller. If you wish to use the UIS extension cord, the only sensor that can be used is the one connected directly to your smart controller.

The port must be dry and capped when not in use to keep liquid and debris out.



CONTROLLER AI+ shown

10

MORE INFORMATION

PROGRAMMING



For in-depth programming instructions, scan this QR code to view a digital manual.

WARRANTY

Our warranty program is our commitment to you, the original customer, that product sold by AC Infinity Inc. Will be free from defects for TWO YEARS from the date of purchase. If you have any issues with this product, contact us and we'll happily resolve your problem or issue a full refund!



WEBSITE | www.acinfinity.com

EMAIL | support@acinfinity.com

PHONE | 626-923-6399, 9 am to 5 pm PST

ADDRESS | 21880 BAKER PARKWAY

CITY OF INDUSTRY, CA 91789

DEALERS

EMAIL | dealers@acinfinity.com

PHONE | 626-838-4656, 9 am to 5 pm PST

MANUAL CODE SFH2512X1

COPYRIGHT © 2026 AC INFINITY INC. ALL RIGHTS RESERVED

No part of the materials including graphics or logos available in this booklet may be copied, photocopied, reproduced, translated or reduced to any electronic medium or machine-readable form, in whole or in part, without specific permission from AC Infinity Inc.

11

THERMOFORGE T7 QUICK START GUIDE

AC INFINITY